



2024 Annual General Meeting of the New Zealand Wind Energy Association

Chair & Chief Executive Report – 6th November 2024

Peter McCafferty | Chair

Kevin Hart | Chief Executive



Agenda

Item	Description	Time
1	Welcome - Natasha Hood, Senior Associate & Co-lead of the Energy practice, MinterEllisonRuddWatts	3:15pm
2	AGM Begins - Welcome remarks, Kevin Hart <ul style="list-style-type: none">• Apologies• Show of hands for eligible members to vote - have quorum yes/no?• Collect in-person voting papers	3:20pm
3	Chair Report – Peter McCafferty	3:30pm
4	CE Report – Kevin Hart	3:40pm
5	Resolution to Accept: <ol style="list-style-type: none">1. 2024 Annual Performance Report2. Appointment of 2 Associate and 2 Corporate Directors	3:55pm
6	End formal AGM for Members	4:10pm
7	Guest Speaker - Matthew Cleland, Head of Wind and Solar Development, Contact Energy	4:15pm
8	Networking & light refreshments	4:45pm
9	Event concludes	6:00pm



Chair Overview

Peter McCafferty



About NZWEA

Industry Association

- Established in 1997 as a charitable trust to promote the development of wind as a reliable, sustainable, clean and commercially viable energy source
- Policy and regulatory advocacy, public awareness and industry development

Members include 75 organisations with over 550 individuals

- Covers onshore wind and offshore wind energy sectors
- Generators, retailers, wind farm developers, turbine manufacturers, equipment suppliers, suppliers, contractors and consultants

Governed by Independent Board of Directors

- 8 Industry appointed directors, 5 Corporate Members & 3 Associate Members
- Chair appointed by Members or independently by the Board
- Ability to have 2 additional directors at the discretion of the Board

NZWEA Strategy

MISSION:

Achieve at least 25% wind capacity and 12% electricity delivered by 2035.

VISION:

Enable Aotearoa New Zealand's abundant wind resource to increase wind energy generation.

Strategic Priorities



1. Be Aotearoa New Zealand's **trusted advisor** on wind energy.



2. Enhance Aotearoa New Zealand's renewable energy **social license** to operate.



3. Promote wind energy's market position, ensuring the **regulatory environment** supports wind farm development.



4. Enable sustainable **supply chain networks** and technologies to ensure wind energy growth.

Governance

Current Board Members

Retiring Board Members

Name	Category	Company
Jarek Pole	Corporate	BlueFloat Energy
Matthew Tolcher	Corporate	Mercury Energy
Will Thorpe	Associate	Elemental Group
Peter McCafferty	Associate	Beca
Paul Botha	Additional	Roaring40's

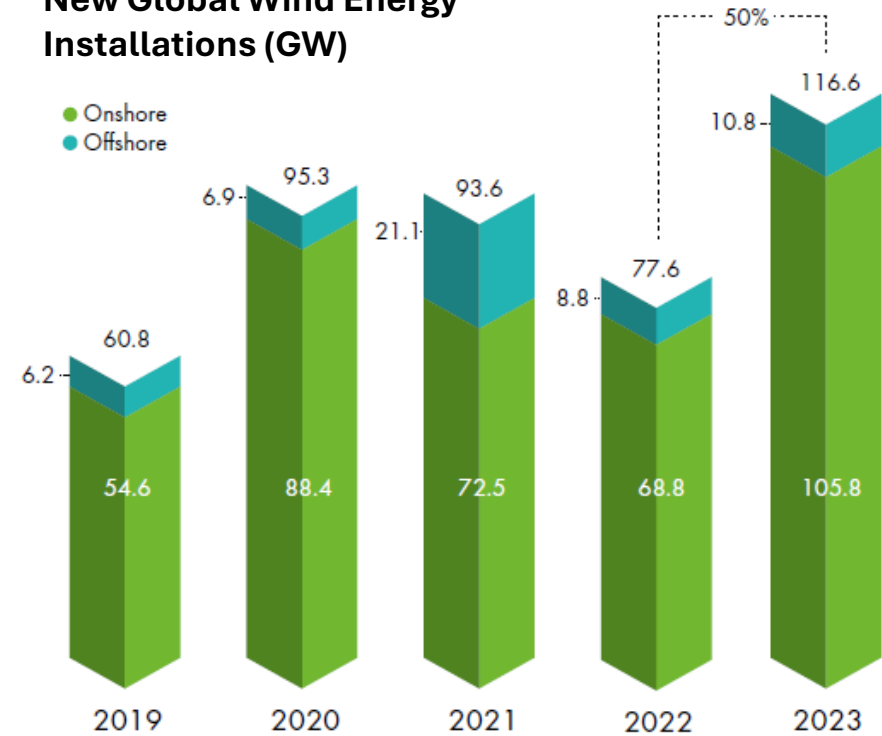
Incumbent Board Members (1 year term remaining)

Name	Category	Company
Chris Moore	Corporate	Meridian Energy
Jim Pearson	Corporate	Manawa Energy
Tim Stringfield	Corporate	Aurecon
Alistair Tippett	Associate	Hiringa

International Trends

- Nearly 117 GW of wind power capacity was added globally in 2023, 50% more than in 2022, bringing total installed wind capacity to 1.21 TW, a growth of 13% compared with last year.
- 2 TW capacity forecast to be reached by 2029, 1 year earlier than previous forecasts.
- New installations in the onshore wind market passed the milestone of 100 GW in 2023 while new offshore wind capacity commissioned last year reached nearly 11 GW, making 2023 the highest and the second-highest year in history for new wind installations for onshore and offshore, respectively.
- Global supply chain challenges continue to exist across the entire sector out to 2035, where demand significantly outstrips supply especially in Europe and the US.

New Global Wind Energy Installations (GW)



Source: Global Wind Energy Council 2023 Report



Current State of Wind Energy in Aotearoa New Zealand

Kevin Hart | Chief Executive

Current state - Onshore

- Onshore wind energy is one of New Zealand's largest sources of renewable energy.
- There are **21 operational** onshore wind farms, consisting of over **661 wind turbines**, providing **1,263 MW** (1.3 GW) of capacity, supplying up to 553,000 NZ households.
- Onshore wind energy now represents **12.0%** of the grid's total installed capacity.
- In the twelve-month period prior to 30 June 2024, onshore wind energy delivered **3,645 GWh/y** equating to **8%** of the grid total.

Total National
Grid Capacity
10,566 MW
(June 2024)

NEW ZEALAND
OPERATIONAL ONSHORE WIND FARMS



Current state - Offshore

- Offshore wind energy is one of New Zealand's newest sources of large-scale renewable energy opportunity.
- Legislation for **Offshore Wind Energy** will be introduced in early 2025 with feasibility permits offered to the market in late 2025.
- There are 6* international developers actively progressing 11 offshore wind projects, ranging in size from 810 MW to 1125 MW.
- Developers are building their respective social license, undertaking environment studies, legislative frameworks, commercial arrangements and building supply chain logistics.

Total Project
Capacity
Investigated
11 GW*
(overlapping)

NEW ZEALAND POTENTIAL OFFSHORE WIND FARMS



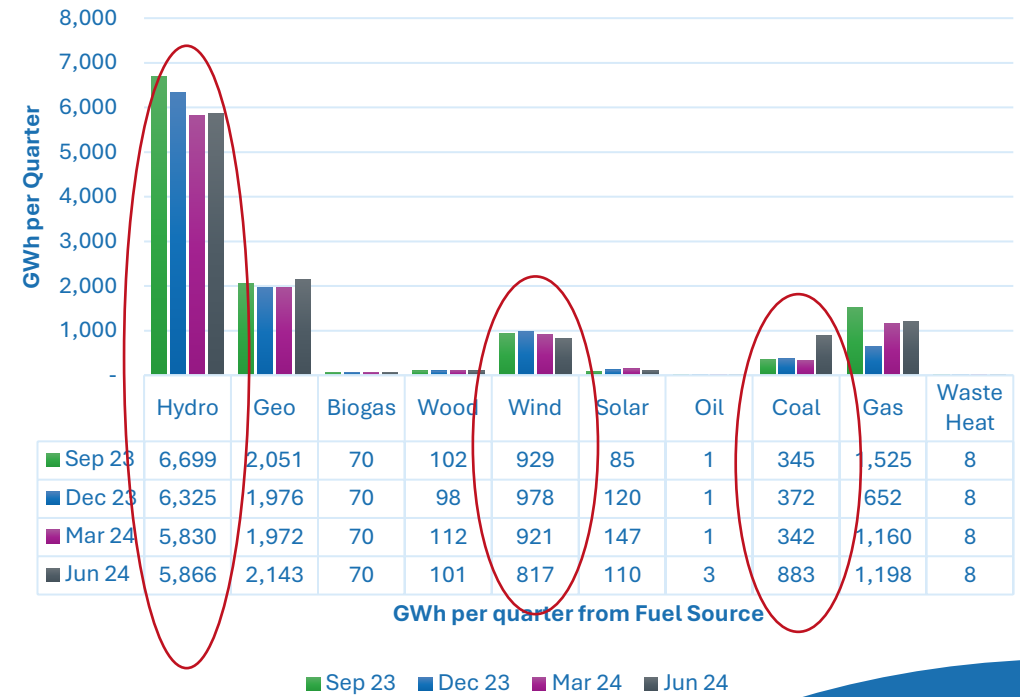
* On 24th October 2024 BlueFloat Energy announced their intention to exit the NZ market in early 2025, reducing the total investors to 5, and the total project capacity to 8GW

Renewables growth & energy constraints

- Overall, in 2023, renewable generation delivered 87% of NZ's total electricity, increasing to over 90% in Q4 2023, but dropped to 81% in the Q2 of 2024.
- Decline driven by a 19% decrease in hydro electricity generated (1,400 GWh**) compared to June 2023, due to the dry year scenario.
- Coupled with high winter peak demands, coal fired generation almost tripled* to keep the lights on.
- Following a record wind energy production in Q4 2023 of 978 GWh, in Q2 2024 it dropped to 817 GWh or by 16% (161 GWh).
- Amongst other solutions, more wind generation is desperately needed to increase the diversity of this renewable resource, while reducing our reliance on hydro as base load during dry years.

Sources of Electricity Generated

July 2023 - Jun 2024



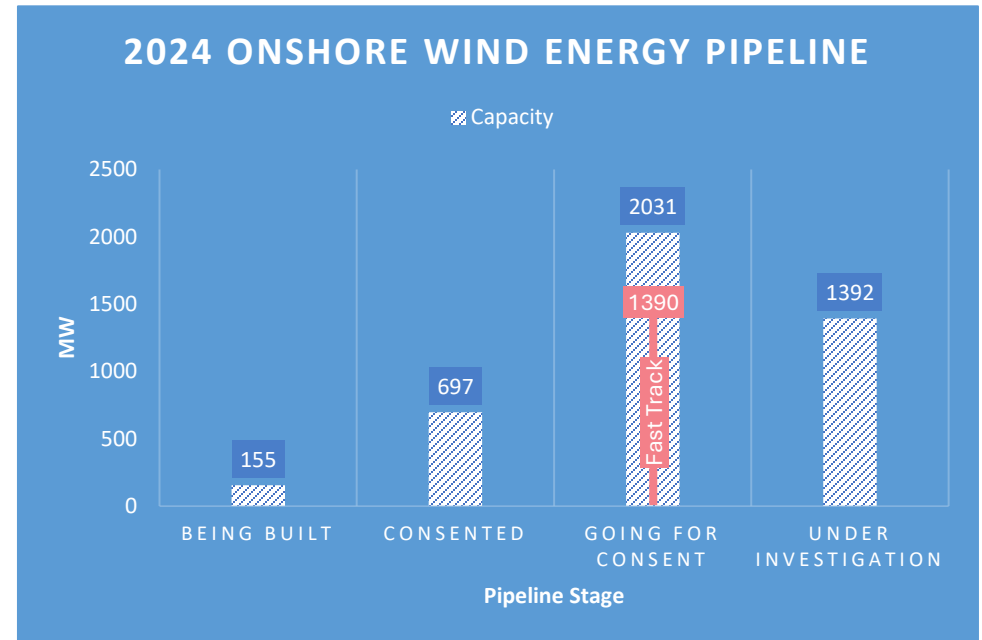
Source: MBIE Electricity Statistics 12 September 2024

* Genesis Energy investor day announced that in autumn 2024, they had stockpiled 800,000 tonnes of coal vs. a normal stockpile of 350,000 tonnes

** In June 2023, hydro generated 7,262 GWh in the quarter, compared to the June 2024 hydro generated of 5,866 GWh for the quarter. The hydro quarterly average over the last 10 years = 6,621 GWh

Domestic wind market growth

- To date, 4.275 GW of new onshore wind projects are under investigation, with 700 MW already consented.
- Almost 1.4 GW is progressing under the Government’s Fast Track legislation proposal... could see **2 GW of wind consented** within 18 months.
- The offshore wind market continues to gain momentum with **6* international investors** progressing 9 overlapping projects
- The first 1 GW offshore wind project will likely commence construction in early-mid 2030’s.
- Forecasts indicate that we will need *at least* 6.5 GW of wind energy capacity to meet the electrification demand scenarios by 2050.

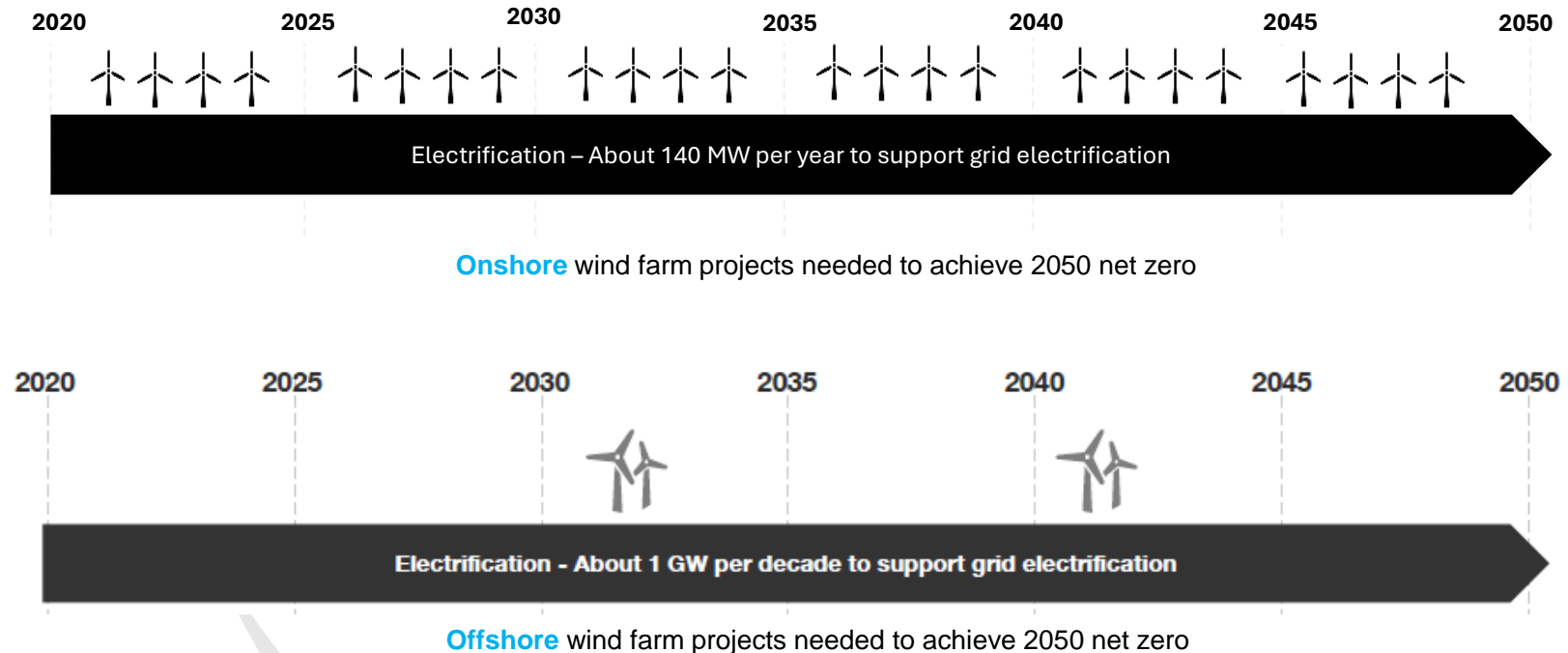


* On 24th October 2024 BlueFloat Energy announced their intention to exit the NZ market in early 2025, reducing the total investors to 5

‘It took over 25 years to build the first wind 1 GW, but we must now build over 6 times this amount within the next 25 years to meet our renewable and net zero carbon targets.’

CAPEX Prices

- We have a sufficient wind energy pipeline to meet our electrification needs, where 4 GW – 5 GW of onshore projects, and 2 GW – 3 GW of offshore projects are forecast to be built between now and 2040.
- But... not all the current pipeline will be developed so we need ‘both’ technologies, and increased pipelines!
- CAPEX costs saw an 8% increase in the last 12 months, but long term, prices are expected to decline as supply – demand dynamic re-balances from the 2030’s.



* Based upon 1 x 140 MW onshore wind farm built every year on average, plus 1 x 1000 MW offshore wind farm project built by 2035.

CAPEX Cost (A\$/MW) Forecasts

Type	2024	2030	2040	2050
Onshore Wind	A\$2.94M	A\$2.4M	A\$2.0M	A\$1.9M
Offshore Wind Fixed	A\$5.5M	A\$5.2M	A\$4.9M	A\$4.8M
Offshore Wind Floating	A\$7.5M	A\$6.5M	A\$5.7M	A\$5.7M

Source: Australia’s National Science Agency CSIRO GenCost 2023-24 Final

Regulatory directions

- The coalition government revised its energy policies to achieve a target of **doubling renewable energy** generated by 2050, translating to an additional 37,000 GWh/y, or 11GW-13GW additional renewable capacity.
- RMA Reforms comprise 3 Phases:
 1. Repealing the Natural and Built Environment Act and Spatial Planning Act
 2. Progress current RMA amendments, as follows:
 - i. Fast-track Approvals Bill - 2024
 - ii. Targeted amendments to the existing RMA (two Bills) - 2024
 - iii. Changes to 14 National Policy Statements (incl. NPS-REG) & National Environmental Standards – 2024 to 2025
 3. Replacement of the RMA – 2025 to 2027
- Implementing a new regulatory regime for offshore renewable energy, two step permitting process:
 1. Feasibility Permit - mid 2025
 2. Commercial Permit - TBA





NZWEA Performance Report & Financial Statements

Key Achievements

1. Membership growth = CAGR 7% (75)

- 2021 = 58
- 2022 = 61
- 2023 = 72
- **2024 = 75**

2. 2023 annual wind energy summit

- 190 attendees (242 attendees at 2024 summit)
- Revenue of \$239,495 (\$369,791 at 2024 summit)

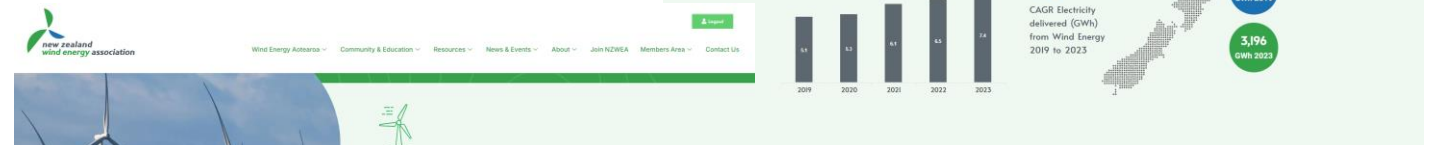
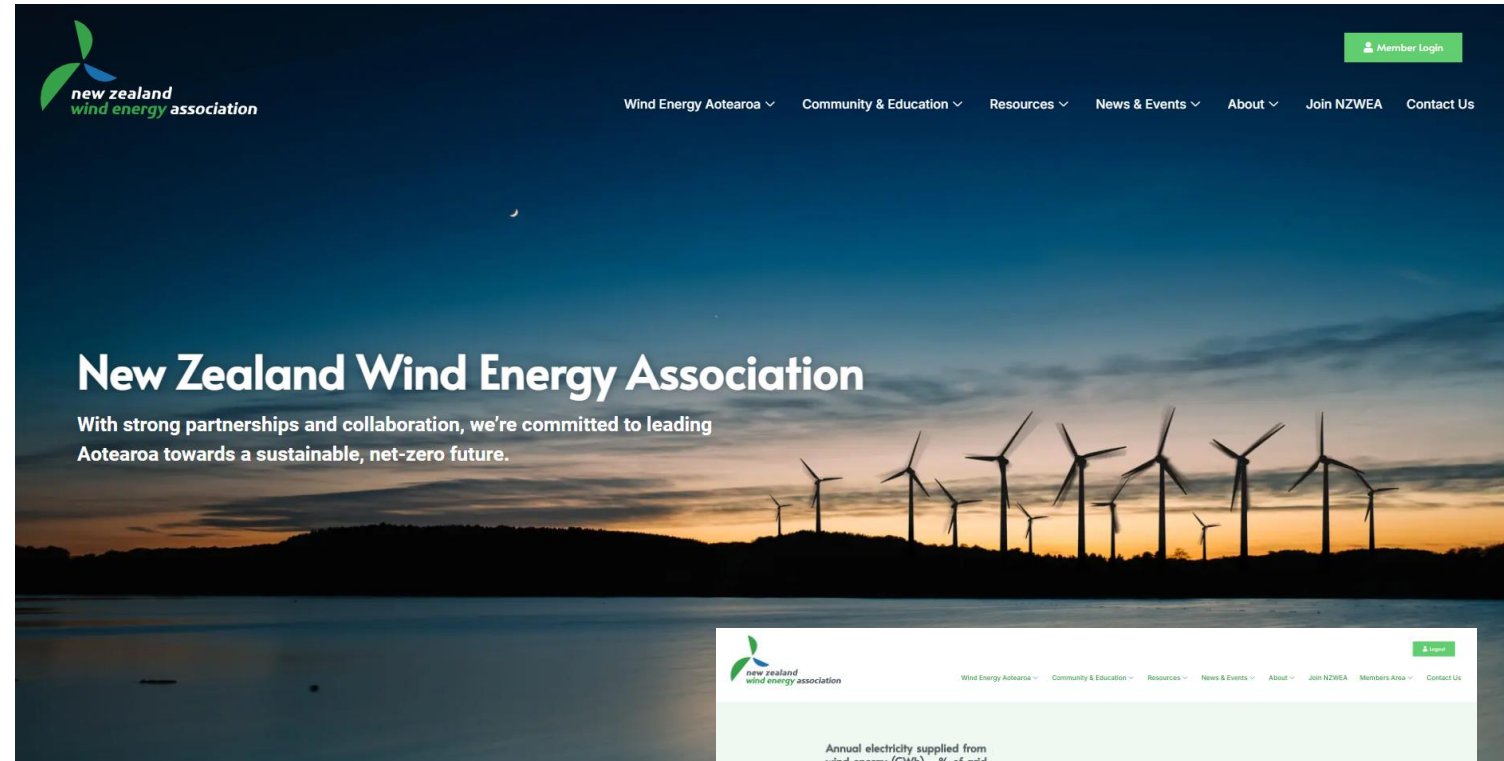
1. New NZWEA website platform

- Live on 15th October
- 10-month project duration
- Replaced website developed in circa. 2008

1. LinkedIn Profile

- 5,333 followers (increase from 950)

2. Commenced Speaker Series Events = 2 complete



Financial Results

FYE 30 June 2024

1. Highlights

- Total Cash Received = +71%, \$672,502
- Total Income = +29%, \$459,417
- Closing cash balance at 30 June = +85%, \$335,146

2. Increases

- Expense increase = +56% (\$457,672)
- Expenses cover:
 - Two employees at 32 hours per week each.
 - One-off website redevelopment cost = \$13,487 (50% deposit)

	NOTES	2024	2023
Revenue			
Fees, subscriptions and other revenue from members	1	214,143	164,898
Revenue from providing goods or services	1	239,495	190,092
Interest, dividends and other investment revenue	1	5,779	2,377
Total Revenue		459,417	357,367
Expenses			
Employee related costs	2	320,081	180,907
Costs related to providing goods or service	2	132,505	109,972
Other expenses	2	5,086	2,386
Total Expenses		457,672	293,266
Surplus/(Deficit) for the Year		1,745	64,101

D R A F T - Subject to receipt of independent review by Baker Tilly



2024 Board Voting Results

Member Nominations & Votes Received

Open Positions: 2 x Corporate Directors & 2 x Associate/Individual Directors

Corporate Nominations Received

Name	Category	Company	Votes	Voting Status
Tony Rovers	Corporate	Contact Energy	120	
Jarek Pole	Corporate	BlueFloat Energy	60	
Matt Tolcher	Corporate	Mercury Energy	180	Appointed
Peter Spencer	Corporate	Parkwind (Jera Group)	210	Appointed

Associate & Individual Nominations Received

Name	Category	Company	Votes	Voting Status
Will Thorpe	Associate	Elemental Group	25	
Paul Botha	Associate	Roaring40's	79	Appointed
Anant Prakash	Associate	AECOM	24	
Peter McClean	Associate	Pioneer Energy	55	
Ross Copeland	Individual	Individual	25	
Peter McCafferty	Associate	Beca	74	Appointed
Brigid McArthur	Associate	Greenwood Roche	54	

Incumbent Directors – 1 Year term remaining

Name	Category	Company
Chris Moore	Corporate	Meridian Energy
Jim Pearson	Corporate	Manawa Energy
Tim Stringfield	Corporate	Aurecon
Alistair Tippett	Associate	Hiringa

Note: Member votes received by proxy and in-person were **64%** of total eligible membership

2024 AGM Resolutions

It is recommended that NZWEA Members:

1. Following receipt of the independent review of the financial statements being prepared by Baker Tilly, delegate the approval of the 2024 Annual Performance Report to the NZWEA Board as presented by Connected Accountants; and
2. In accordance with the highest polling votes received, appoint the following nominees as Board Directors for a two-year term.

Name	Category	Company	Voting Status
Matt Tolcher	Corporate	Mercury Energy	Appointed
Peter Spencer	Corporate	Parkwind (Jera Group)	Appointed
Paul Botha	Associate	Roaring40's	Appointed
Peter McCafferty	Associate	Beca	Appointed

The recommendations were passed by Members



Thank You
Ngā mihi maioha

